



Amenities:

- 100 x 200 sand arena
- 60 ft round pen
- Parking for 12 horse trailers
- Access to trails including:
 - Tolt River Pipeline
 - Redmond Watershed
 - Farrell McWhirter Park
 - Snoqualmie Valley Trail

Park Information:

- Park is located in un-incorp. Woodinville.
- Park is open during daylight hours. Gates are locked each evening.
- Passive park. Use is first come, first serve and cannot be reserved.
- Please leave it as you found it or better. Trash and manure pickup is a volunteer effort so please take it with you.
- No rest room facilities, water or electricity
- Dogs must be on leash. No dogs in arena or round pen.
- Horses must be attended at all times.
- No activities endangering the welfare of horses or humans.
- No bicycles or motorized vehicles allowed.

ABOUT NORTHWEST PARKS:

Northwest Parks Foundation works to preserve, maintain and enhance parks throughout the Puget Sound area. NWP works with private, public and government organizations to build new parks, enhance facilities and maintain our public playspaces.

For more information about NWP, go to www.nwparks.org



ABOUT KING COUNTY EXECUTIVE HORSE COUNCIL:

KCEHC is a political non-profit organization dedicated to the preservation and enhancement of the equestrian lifestyle, including trail access, parks and working with local governments to protect equestrian interests.

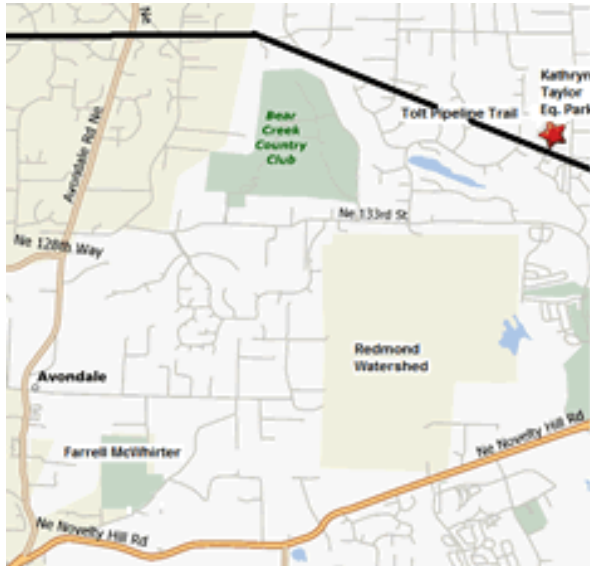
For information about KCEHC, go to www.kingcountyexecutivehorsecouncil.org



**GATEWAY TO EQUESTRIAN TRAILS
NEW ARENAS
BROAD HORIZONS**



PARK LOCATION



Directions from I-405:

- Take WA 520 Eastbound toward Redmond
- Stay in left lane. Freeway ends and turns into Avondale Rd. NE.
- From Avondale Rd. NE., turn right onto NE 132nd St.
- Turn right onto NE 133rd St.
- Turn left onto 232nd Ave. NE 232nd Ave NE crosses over the Tolt Pipeline Trail. The 27 acre Kathryn Taylor Equestrian Park is located on the left, just past the Tolt Pipeline Trail.

How does a park like this get built?

It takes vision, and people to see that vision through to completion.

Kathryn Taylor was one of those people. One of the founders and President of the King County Executive Horse Council, Kathryn worked tirelessly to preserve the equestrian way of life in rural and urban King County. In the 1980s when many developments were being proposed for the Bear Creek area, Kathryn, as President of KCEHC, suggested that the developers set aside 30 acres to make up for the loss of horse trails in the area.

In 2002, an agreement was reached between Quadrant, Northwest Parks Foundation, King County Executive Horse Council and King County Parks which included permanent placement of more than 300,000 cubic yards of dirt in exchange for funds to build the equestrian amenities and an endowment for maintenance.

In 2005, King County Executive Horse Council and Northwest Parks began design of the park's arena, round pen and parking lot. Northwest Dirtworks constructed the horse amenities in 2007, and the park opened officially on April 5, 2008.

Kathryn left a legacy for each of us. The Kathryn Taylor Equestrian park will not only bestow a befitting honor on Kathryn, it will also remind us how "she gave us all a leg up" as she would like us to do for others.



If you board your horse at a stable, attend shows at equestrian facilities, ride the many trails in our area, or keep your horse at home, you have benefited from King County Executive Horse Council's long history of working hard to protect your interests in all things horse-related.

Please help us continue the legacy and ensure a healthy and vibrant equestrian presence throughout King County. Join King County Executive Horse Council at; www.kingcountyexecutivehorsecouncil.org

Northwest Parks Foundation was instrumental in making this park a reality and supporting its future. NWParks manages the maintenance endowment provided by Quadrant and led the team that designed and built the horse amenities. NWParks makes it possible for donations to be made to parks and provides support for the development and enrichment of parks throughout our area.

If you would like to help with the maintenance of this park, donations are gladly accepted at; www.nwparks.org

